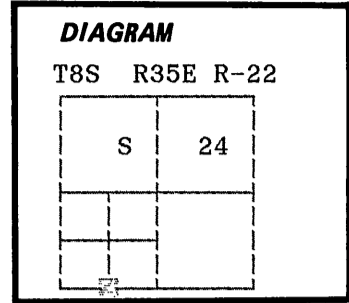


CERTIFIED RECORD OF LAND CORNER MONUMENTATION

History of original corner establishment:

Corner not previously established



No record of subsequent monumentation found in Grant County survey records.
Description of corner evidence found:

NONE

See map of survey dated September, 1987 *11/10/19*
Description of monument and accessories established to perpetuate the original location of this corner:

At position determined by survey, I set a 2 1/2" x 30" aluminum pipe with aluminum cap marked as shown, 24 inches in the ground, from which;

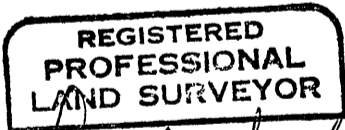
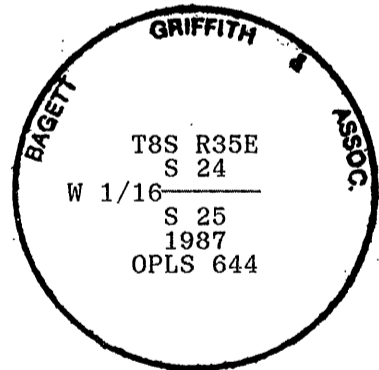
New Bearing Trees:
A 26 inch diameter Douglas Fir bears S62°W, 27.34 feet marked W1/16 S25 BT
A 15 inch diameter Ponderosa Pine bears N82°W, 24.37 feet marked W1/16 S24 BT

Raised a mound of stone around monument, 2 ft. base to top of cap.
Painted a 6 inch red band around all BTs and attached 54-3 and 54-9 signs.

Set a steel fencepost approximately 5 feet North with 54-2 and 54-9 signs attached.

I hereby certify that the above corner point was perpetuated as hereon described on August 25, 1987.

Witnesses: Greg Blackman and Jeff Petersen



Duane I. Griffith
OREGON
JULY 10, 1964
DUANE I. GRIFFITH
644

I used a steel tape and magnetic compass in the establishment of new accessories. I used 17° East magnetic declination and the distances are to a 50d spike driven in the right side of the root crown. I attached a brass washer marked OPLS 644 to the BT blaze.

Office of *Surveyor* County of *Grant*
State of *Oregon*, I hereby certify that the within instrument was filed in this office
for record on the *23* day of *SEP*, 19*87*
Blair D. Baggett by *Blair D. Baggett*
(COUNTY OFFICIAL) (DEPUTY)